

**SPEIRS
MAJOR**

Gardermoen Airport,
Oslo, Norway

**LIGHT
ARCHITECTURE**

8 Shepherdess Walk
London,
N1 7LB
United Kingdom

T +44 (0)20 7067 4700

Co-lab Shibuya Cast
23-21, Shibuya 1-Chome
Tokyo 150-0002
Japan

T +81 (0)3 3400 8855

info@smlightarchitecture.com
press@smlightarchitecture.com

SPEIRS MAJOR



With a focus on passenger experience and sustainability, the extension to Oslo's Gardermoen airport is designed to capture as much natural light as possible. Where changes in the weather and natural seasonal transitions begin to reduce its availability, the artificial lighting system smoothly and imperceptibly steps in.

CLIENT
Avinor OSL

ENGINEER
IPRAS

PHOTOGRAPHER
Knut Ramstad

ARCHITECT
Nordic — Office of
Architecture

PHOTOGRAPHER
Ivan Brodey

PROJECT TEAM
Keith Bradshaw,
Adrien Flouraud

SPEIRS MAJOR

The Passenger Journey

Delivering a consistently pleasant and uplifting environment that is connected to the surrounding natural environment, making the transition to a new city or country smoother and more enjoyable. It compensates for loss of daylight where needed, and dims down to save energy whenever possible.

Noticeably cooler and fresher colour temperatures on the bridges and exterior areas surrounding the new North Pier mark the transition to and from airside, leading to the warm welcome of the interior terminal spaces where downlighting and indirect lighting to the wooden ceiling is tuned to 3000K.



SPEIRS MAJOR



SPEIRS MAJOR



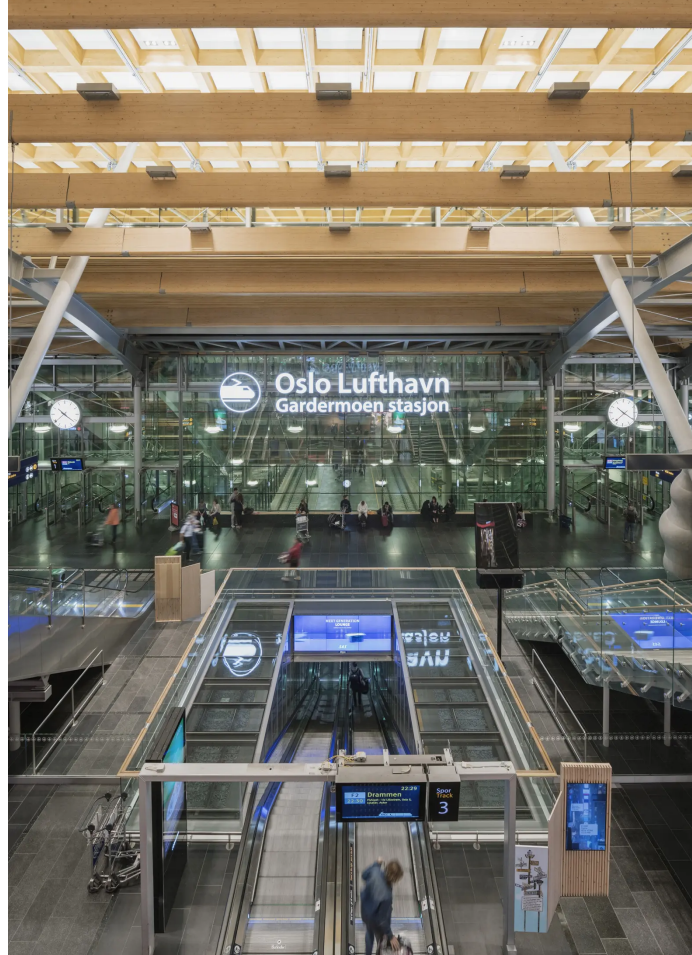
A series of technical shafts feature backlit perforated metal create graphic visual landmarks.



SPEIRS MAJOR



SPEIRS MAJOR



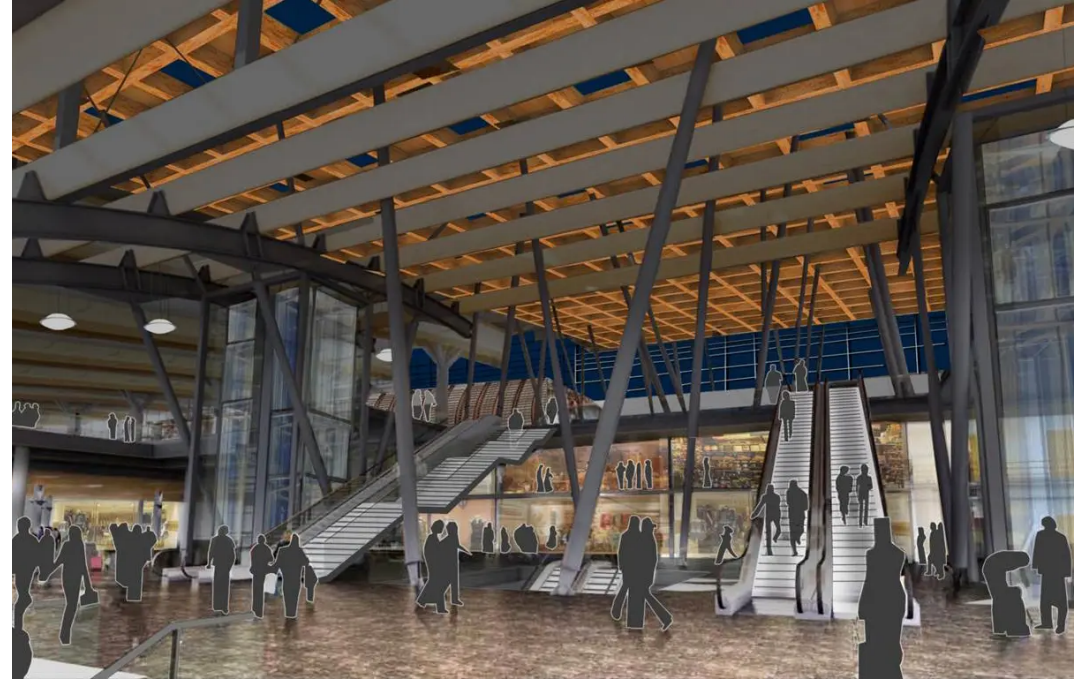
The artificial light adjusts itself in response to shifts in both level and colour temperature, ranging from 3000K to 6000K over the course of the day and across the seasons.

The artificial light sources are integrated and concealed where possible, supporting both the clean minimalist approach of the design and the blurred distinction between natural and artificial conditions.

SPEIRS MAJOR



Concept image to show balanced composition by Day



... and by Night